



**Safehouse Progressive Alliance
for Nonviolence**

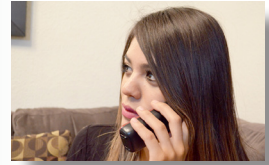
Serving survivors of Domestic Violence, Intimate
Partner Violence and Stalking since 1979

*Creating positive social change and working
together to end violence
Creando un cambio social positivo y trabajando
juntos para poner fin a la violencia*

Specialized support for Immigrants, LGBTQ,
Elder and Spanish speaking survivors.

**24/7 Crisis Line 303.444.2424/ hotline@safehousealliance.org
www.safehousealliance.org**

Free and confidential
Emotional support, resourcing, safety planning
Spanish-bilingual trained advocates
*Language Line available for other languages

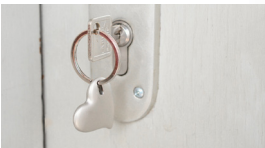


Counseling Program

Individual counseling sessions and support groups
Children and Youth Counseling - Abuse in Later Life programs
Support for immigrant survivors and Latinx services
Bilingual advocacy, resourcing, and safety planning
*Phone and video sessions. In-person sessions available as needed for client safety

Legal Advocacy Program

Confidential assistance and support to survivors as they
navigate the criminal or civil legal system
Spanish bilingual legal advocates available at Boulder Justice
Center and Broomfield Combined Courts
Civil Protection Orders: advocate assistance and potential free
attorney representation through SPAN's Lawyers for Victims
Program

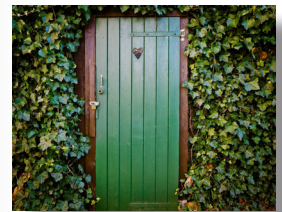


Housing, Transitional Services and Economic Justice Program

Confidential bilingual support, community advocacy,
case management, housing assistance, and Economic
Empowerment Workshops to help survivors work toward
emotional and financial self-sufficiency.

Shelter

Emergency shelter at a confidential location for individuals and
families seeking refuge
Case management, community referrals, support groups,
individual counseling, safety planning and help meeting basic
needs as food and clothing
* Accommodations have been made to comply with COVID safety guidelines
** We partner with the Humane Society of Boulder Valley to foster pets during stay



Community Training and Education

Peers Building Justice Program
Creating Protective Environment Project -Hot Spot Mapping
Social Justice and Anti-violence Education and Trainings
*Classroom based violence prevention curriculum adapted to online formats



Safehouse Progressive Alliance for Nonviolence

Atendiendo sobrevivientes de Violencia Doméstica, Apoyo especializado para sobrevivientes Inmigrantes, Violencia en la Pareja y Acoso desde 1979

*Creating positive social change and working
together to end violence
Creando un cambio social positivo y trabajando
juntos para poner fin a la violencia*

Línea Telefónica de Crisis 24/7

Gratuita y Confidencial

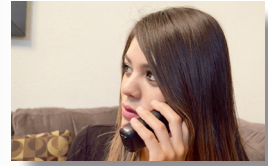
Apoyo emocional, recursos, planes de seguridad
Asesores entrenados bilingües (Español)

*Línea telefónica disponible en otros idiomas

303.444.2424

hotline@safthousealliance.org

www.safthousealliance.org



Programa de Consejería

Sesiones individuales de consejería y grupos de apoyo

Consejería para Niños y Jóvenes - Programa para Abuso de Adultos mayores - Apoyo para sobrevivientes inmigrantes y comunidad Latinx
Asesoría bilingüe, recursos y planes de seguridad

* Sesiones por teléfono y video. Sesiones presenciales disponibles según se necesite por seguridad del cliente.

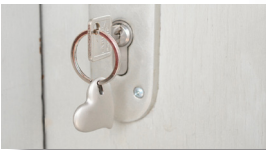


Programa de Asistencia y Servicios Legales

Confidential assistance and support to survivors as they navigate the criminal or civil legal system

Spanish bilingual legal advocates available at Boulder Justice Center and Broomfield Combined Courts

Civil Protection Orders: advocate assistance and potential free attorney representation through SPAN's Lawyers for Victims Program



Programa de Vivienda, Servicios de Transición y Justicia Económica

Apoyo bilingüe y confidencial, asesoría comunitaria, manejo de casos, asistencia para vivienda y Talleres de Empoderamiento Económico para ayudar a los sobrevivientes en su camino a la autosuficiencia emocional y financiera

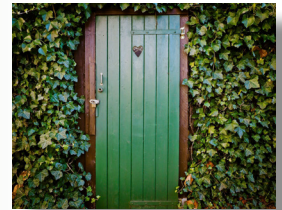
Albergue - Refugio

Albergue de emergencia en una ubicación confidencial para individuos y familias en búsqueda de refugio.

Manejo de casos, referencias comunitarias, grupos de apoyo, consejería individual, planes de seguridad y ayuda para atender necesidades básicas como alimentos y ropa.

* Se han hecho adaptaciones para acatar los lineamientos de seguridad COVID

**Estamos asociados con la Sociedad Humanitaria del Valle de Boulder (Humane Society of Boulder Valley) para hospedar mascotas durante su estadía



Educación y Capacitación para la Comunidad

Programa *Peers Building Justice* (PBJ)

Proyecto *Creating Protective Environment* - Mapeo de Hot Spot

Educación y Capacitación sobre Justicia Social y Anti violencia

*Todos los talleres y currículos de prevención de violencia adaptados a formato virtual

**Ofrecemos talleres y capacitaciones en Español